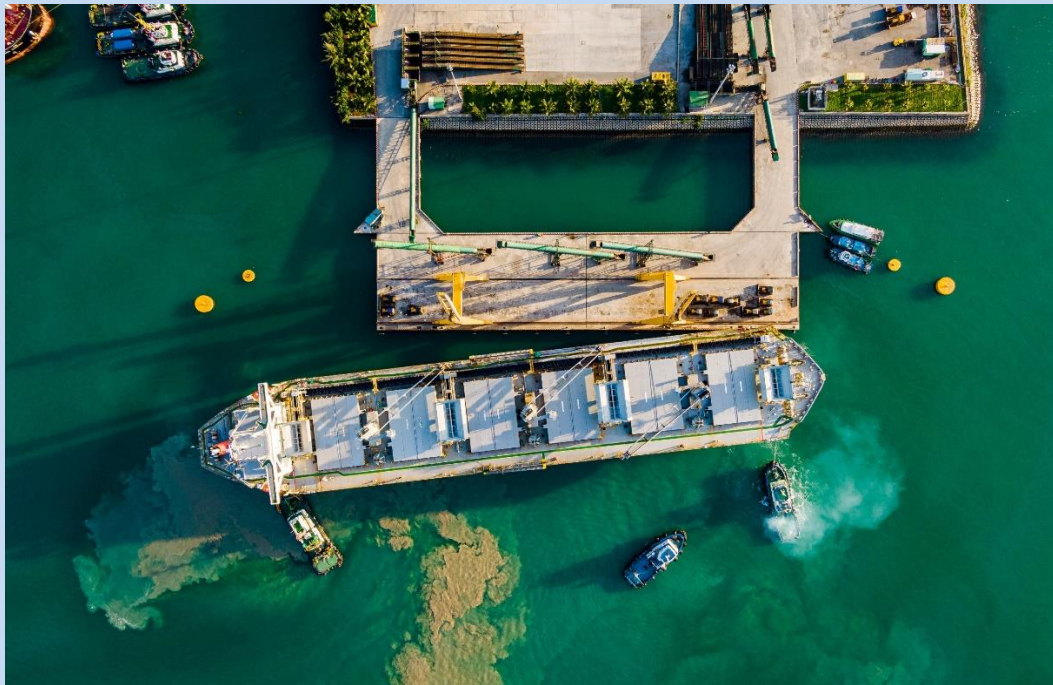


GEMADEPT CORPORATION
GEMADEPT DUNG QUAT INTERNATIONAL PORT

§

Port information



§

Date updated: 2023
Composed and updated by: Nguyen Mai Truong (Mr. Adwin)
Email: truong.agy@gmddungquat.com.vn

Gemadept Dung Quat Port – Port information



CHANNEL

1	Min. Depth below chart datum	12 m
2	Min Width	120 m
3	Quality of Bottom	Mud and sand
4	Required UKC	1.44 cm (Vessel DWT above 50,000)
5	Dredging plan & maintenance	Depending on port's operation situation
6	Route / Distance to Gemadept berth	03 miles (about 05 kms)
7	Time to complete	1.5 hours
8	Tidal regime	Irregular diurnal.
9	Average tidal range	0.6 - 1.2 m
10	Break water	1.5 km.



TURNING BASIN

1	Location: CENTER	15°24'48"3 / 108°47'28"5
2	Diameter L x B	360 x 360 m.
3	Min. Depth below chart datum	12 m
4	Quality of bottom	Mud and sand
5	Required UKC	1.44 cm (Vessel DWT above 50,000)



ANCHORAGE

1	Location	15°26'30"N, 108°45'30"E
2	Depth	20 m
3	Quality of Bottom	Mud and sand



NAVIGATION AID (CHART SCALE SYSTEM)

1	Channel buoys	15°26'13"1 (N); 108°45'10"5 (E)
2	Beacons	Yes
3	Transit Marks	Yes



PILOT (Pilot Company - Zone IV - Da Nang City)

1	Pilot Station	15°26'30"N, 108°45'30"E
2	Service hour	24 hours, depends on wind speed, currents, vessel's draft ...
3	Communication between pilot and vessel	By VHF on CH16, then change to CH12 for working
4	Maneuvering methods in the harbor	Heaving line get on shore then make fast the ship's rope on bits and floating dolphin



TUGBOAT

1	Number of tugboats	✓ An Hai 27: 2,800 Hp ✓ An Hai 09: 980 Hp ✓ Dung Quat 05: 4,860 Hp ✓ Dung Quat 18: 3,040 Hp ✓ Dung Quat 19: 3,000 Hp. ✓ Dung Quat 68: 2,800 Hp.
2	Tower Rope	Vessel's rope
3	Where making fast tugs for entering & dispatch for departure	At Buoy 1
4	Criteria for numbers of tugs for vessel's entry & departure: <ul style="list-style-type: none"> ➤ Vessels with length of overall from 80m to 110m have to use minimum 1 tugboat with at least 500 Hp. ➤ Vessels with length of overall from 110m to 140m have to use minimum 2 tugboats with total Power 1700Hp, in which the minimum one is 500 Hp. ➤ Vessels with length of overall from 140m to 170m have to use minimum 2 tugboats with total Power 2700Hp, in which the minimum one is 1000 Hp. ➤ Vessels with length of overall from 170m to 200m have to use minimum 2 tugboats with total Power 3500Hp, in which the minimum one is 1500 Hp. ➤ Vessels with length of overall from 200m to 250m have to use minimum 3 tugboats with total Power 7000Hp, in which the minimum one is 2000 Hp. ➤ Vessels with length of overall from 250m to 300 m have to use minimum 3 tug-boats with total Power 8500Hp, in which the minimum one is 2500 Hp. ➤ Vessels with length of overall over 300m have to use minimum 4 tug-boats with total Power 14000Hp, in which the minimum one is 3000 Hp. <p>Beside, basing on the actual factors, Director of Quang Ngai Maritime administration will decide the numbers of tugboat and hose-powers of each one using for marine-safety, regulated as following:</p> <ul style="list-style-type: none"> ➤ Vessels transporting with Gas, oil, liquid, explosive... ➤ Vessels transporting with special equipment. ➤ Vessels have LOA longer than Berth length. ➤ Other special cases for safe navigation. 	
5	Install VHF on Tug boat or not	Obligation
6	Operating Criteria	Pilot's order by Shipping Agent
7	Owner & Operator	An Hai Co., Ltd. BFC Van Tuong.



BERTH FACILITY

1	Name of berth	Gemadept Dung Quat Internatioanl Port - GMP.
	a. Max allowable size / dwt	70,000 dwt for vessels loading woodchip cargo. 50,000 dwt for vessels loading/discharging other kinds of cargo in bulk.
	b. LOA	Berth LOA 145 + 110 m (02 x 200 MT floating buoys at 02 ends) Vessels JR SUMMER with DWT 71,120 mts, LOA 228 m berthed successfully
	c. Width of berth	33.5 m
	d. Depth / Height of berth	16 m (12m + 4m)
	e. Max Sailing draft	11.1 m as channel limit
	f. Speed	Pilot's order – Master should be careful when vessel connect to berth; speed for connect to berth's fender not over than 0.1m/s. Angle between ship and berth's not over than 1degree
	g. U-turn Leading-Bridge	Length: 40 m; Width: 15m
	h. Position	15 ⁰ 24'08''N, 108 ⁰ 47'50''E
2	Water depth below mean L.W. springs	No effect
3	Required UKC	1.44 m for bulk carriers with DWT above 50,000
4	Length of berth	145 m
5	Height of deck level / Air draft	Conveyor clearance: 17.5 m / No Limit, No bridges
6	Max size of vessel ever accommodated	Mv. JR SUMMER with 71,120 DWT
7	Fender Type and materials	Modern Bridge Stone Buffer System, Rubber Dem: 1,510 x 1,810 x 1,305 mm Dwt of Buffer: 70.000 dwt
	Number & interval	14 fenders /145m with 10 m interval
8	Mooring Bit	8 bitts, force 75 mts
9	Berth available & occupancy	As line up
10	<u>Shore-cranes:</u>	
	Liebherr Shore cranes	02 shore cranes moving along the 145 m rail system, with the reachable distance from 4,05 to 32 m, round turn, Safe Weight Load of 40 tons, 15 moves/hour
11	<u>Forklift:</u>	
	Forklift	1x28 SWL, 01x3,5 SWL, 01x4.0 SWL, 01x10 SWL
12	Priority System	Follow Vessel line-up
13	Availability of fresh water	Shore hose connection
14	Bunker supply	Available DO, FO, LO but must be ordered before 48 hours
15	Installation of docking sonar	Nil
16	Density of harbor water	1.010 –1.021
17	Restriction	Wood-chip bulk carrier 70,000 dwt
18	Floating Buoys	02 x 200 tons floating buoys at 02 ends
19	Trailer & chassis	10 trailers for container & 02 trailers for equipment cargo
20	Spreaders	02 x 20'; 02 x 40' 40' specialized for container handling
21	Conveyor assembly	03 sets.
22	Electric Weight Balance (80 tons)	01 set
23	Working time	24/7



LOADING RATE

1	Type and number of loaders for wood-chips	03 conveyors
	Loading rate for wood chip - Capacity	18,000 mts / day / 03 conveyors.
2	Loading Wood pellets	8,000 – 10,000 mt/day/3 gangs with 50 20' containers
3	Working hours	24 consecutive hours working including Sunday & Holiday



COMMUNICATION

1	Communication among Pilot, captain, port, agent, tug, port authority for berthing / unberthing / shifting	By VHF – Channel 16 then change to 12 for working
2	Communication between vessel and port/foreman	By VHF – Channel 01



QUARANTINE

1	Availability of radio practice system	Nil
2	Quarantine station	At Berth or at P/S as per local CDC advice
3	Service hour	Working hour
4	Necessary Documents	Ship Sanitation Control Exemption Certificate, marine health declaration; all crew temperature declaration; crew list; voyage memo



CUSTOMS AND IMMIGRATION

1	Place where officers boarding	No boarding – in/outward formality at port authority office
2	Service hour	27/7
3	Documents	B/L, Cargo Manifest, Cargo plan, Crew effect list, Bond store list, Ship's store list, Ship's property list, Engine store list, Foreign currency list, Passport, etc...